



Government of India
Ministry of Earth Sciences
India Meteorological Department



Press Release

Date: 16th September, 2025

Time of Issue: 1250 hours IST

Subject: (i) Today, the southwest monsoon has further withdrawn from some more parts of Rajasthan; some parts of Gujarat, Punjab and Haryana.

(ii) Heavy to Very heavy rainfall likely to continue over Uttarakhand, East Uttar Pradesh, Bihar, Sub-Himalayan West Bengal & Sikkim for next 2 days.

Realised weather during past 24 hours till 0830 hours IST of today, the 16th September, 2025:

- ❖ **Heavy to very heavy rainfall with Extremely heavy rainfall (≥ 21 cm)** has been recorded at isolated places over Uttarakhand & Meghalaya.
- ❖ **Very heavy rainfall (12-20 cm)** has been recorded at isolated places over East Uttar Pradesh, Himachal Pradesh, Sub-Himalayan West Bengal, Odisha, Bihar, Marathawada, Tamil Nadu & Rayalaseema.
- ❖ **Heavy rainfall (7-11 cm)** has been recorded at isolated places over Coastal Andhra Pradesh, Chhattisgarh, Andaman & Nicobar Islands, Gangetic West Bengal, Vidarbha, Sikkim, Madhya Maharashtra, Manipur, Assam, Konkan, Madhya Pradesh, Jharkhand, Arunachal Pradesh & Telangana.

For more details of realised weather, kindly refer [Annexure I](#).

Withdrawal of southwest Monsoon:

- ❖ Today, the southwest monsoon has further withdrawn from some more parts of Rajasthan; some parts of Gujarat, Punjab and Haryana.
- ❖ The line of withdrawal of southwest monsoon now passes through 31°N/74°E, Bhatinda, Fatehabad, Pilani, Ajmer, Deesa, Bhuj and 23°N/68°E. ([Annexure IV](#))

i. Weather Systems, Forecast and Warnings (refer to [Annexure II & III](#)):

- ❖ An upper air cyclonic circulation lies over northcentral Uttar Pradesh & neighbourhood at lower tropospheric level.
- ❖ An upper air cyclonic circulation lies over east Jharkhand & neighbourhood between lower and middle tropospheric levels.
- ❖ A trough runs from east Jharkhand to east Bangladesh between lower and middle tropospheric levels.
- ❖ An upper air cyclonic circulation lies over east Vidarbha & neighbourhood extending upto middle tropospheric level tilting southwestwards with height.
- ❖ A north-south trough runs from South interior Karnataka to Comorin area across Tamilnadu at lower tropospheric level.
- ❖ An upper air cyclonic circulation lies over north east Assam & neighbourhood at lower tropospheric level.

Under the influence of these systems, the following weather is likely:

Northwest India:

- ❖ Light to moderate rain/thunderstorm at some/isolated places with **isolated heavy rainfall** likely over Himachal Pradesh & West Uttar Pradesh on 16th; Uttarakhand on 16th & 17th; East Uttar Pradesh during 16th - 19th September with **very heavy falls over Uttarakhand on 16th, East Uttar Pradesh on 16th & 17th September.**

East & Central India:

- ❖ Light to moderate rain/thunderstorm at most/many places with isolated **heavy rainfall** likely over West Madhya Pradesh, Chhattisgarh, Jharkhand on 16th & 17th; Vidarbha, Gangetic West Bengal, Odisha, East Madhya Pradesh on 16th; Andaman & Nicobar Islands during 17th -20th; Sub-Himalayan West Bengal & Sikkim during 16th -18th; Bihar 16th -19th September with isolated **very heavy falls over Bihar, Sub-Himalayan West Bengal & Sikkim on 16th & 17th September.**

Northeast India:

- ❖ Light/moderate rain/thunderstorm at most/many places with isolated **heavy rainfall** likely over Assam & Meghalaya during the week; Arunachal Pradesh during the week except on 18th; Nagaland, Manipur, Mizoram & Tripura during 16th & 19th -22nd September.

South Peninsular India:

- ❖ Light to moderate rain/thunderstorm at many/some places with isolated **heavy rainfall** likely over Tamil Nadu during 16th-19th; Coastal Andhra Pradesh & Yanam on 16th; Rayalaseema, Telangana & North Interior Karnataka, Coastal Karnataka on 16th & 17th; South Interior Karnataka on 17th, Kerala & Mahe on 17th & 18th September.
- ❖ Strong surface winds (speed reaching 30-40 kmph) very likely over Coastal Andhra Pradesh & Yanam and Rayalaseema during next 5 days.

West India:

- ❖ Light to moderate rain/thunderstorm at many/some places with **isolated heavy rainfall** likely over Madhya Maharashtra, Marathwada on 16th & 17th, Konkan & Goa during 16th -18th, Gujarat Region on 16th September.

Fishermen warning:

Fishermen are advised not to venture into the following areas during 16th to 21st September:

Arabian Sea (AS):

- Some parts of westcentral, southwest Arabian Sea, along and off Somalia coast during 16th to 21st September, along and off south Oman-Yemen coasts during 16th-18th September; along and off north Oman & adjoining sea areas during 18th to 21st September.
- Some parts of northwest & adjoining westcentral Arabian Sea & along and off north Oman coast on 16th September.
- Along and off south Konkan, Goa coasts, adjoining sea area during 16th to 18th September.

Bay of Bengal (BoB):

- Along and off south Sri Lanka coast and adjoining some parts of southwest Bay of Bengal during 16th & 19th September & Sri Lanka coast during 19th to 21st September; many parts of south Bay of Bengal during 19th to 21st September;
- Gulf of Mannar & adjoining Comorin area during 16th to 21st September.
- Over Andaman Sea during 17th to 21st September.

ii. Weather conditions and forecast over Delhi/NCR during 16th September to 19th September 2025 (Annexure V)

For more details, kindly refer National Weather Bulletin:

https://mausam.imd.gov.in/responsive/all_india_forecast_bulletin.php

For District wise warnings refer: <https://mausam.imd.gov.in/responsive/districtWiseWarningGIS.php>

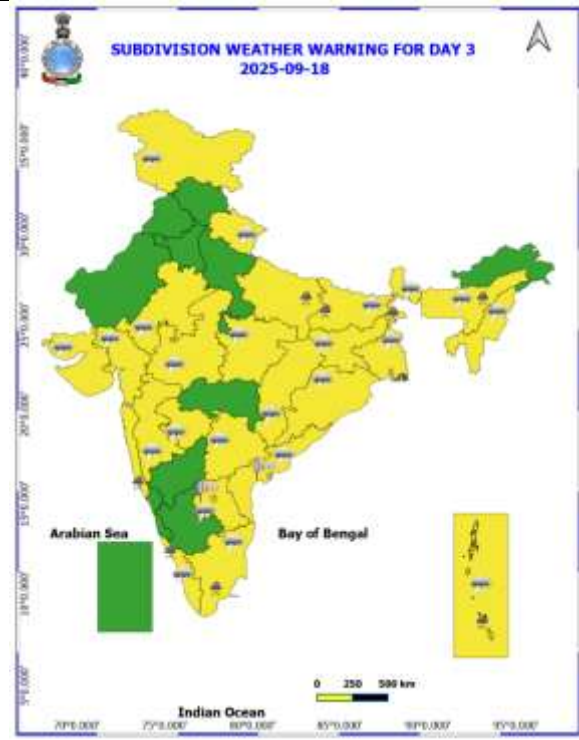
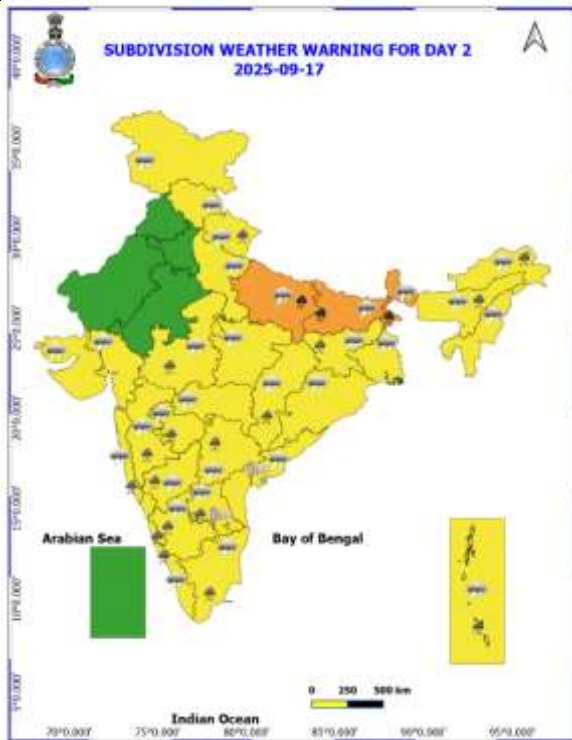
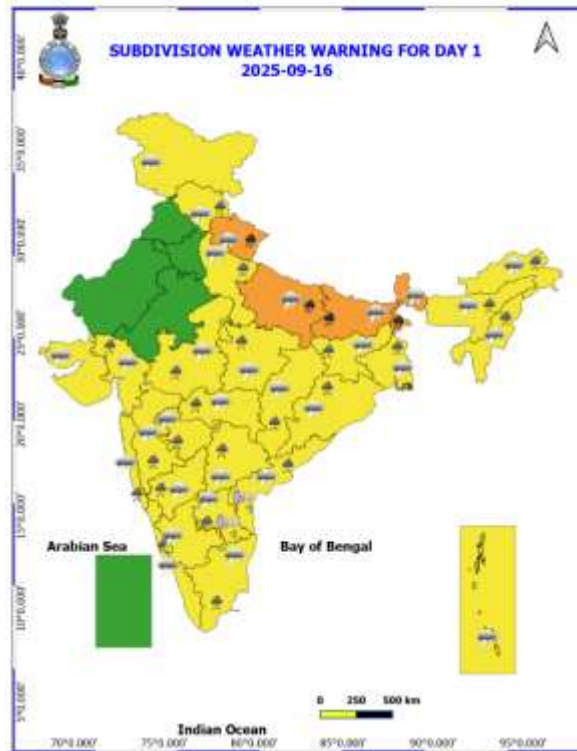
For Fishermen warning refer <https://rsmcnewdelhi.imd.gov.in/fishermen-warning.php>

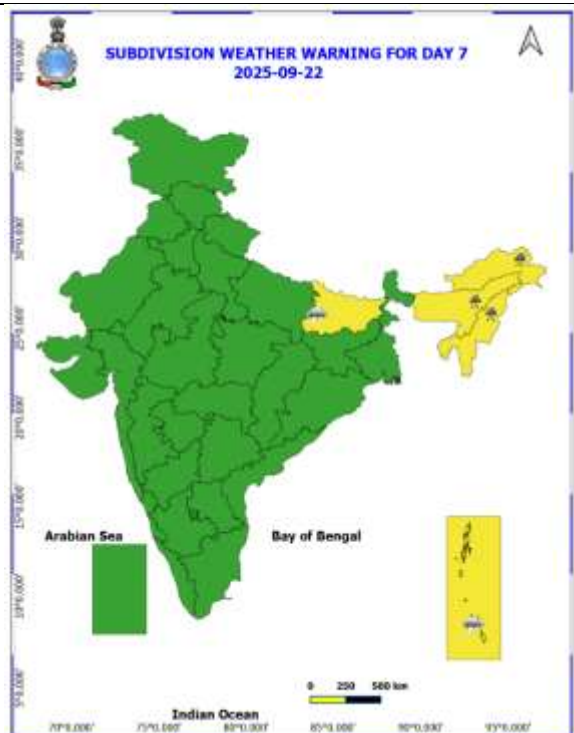
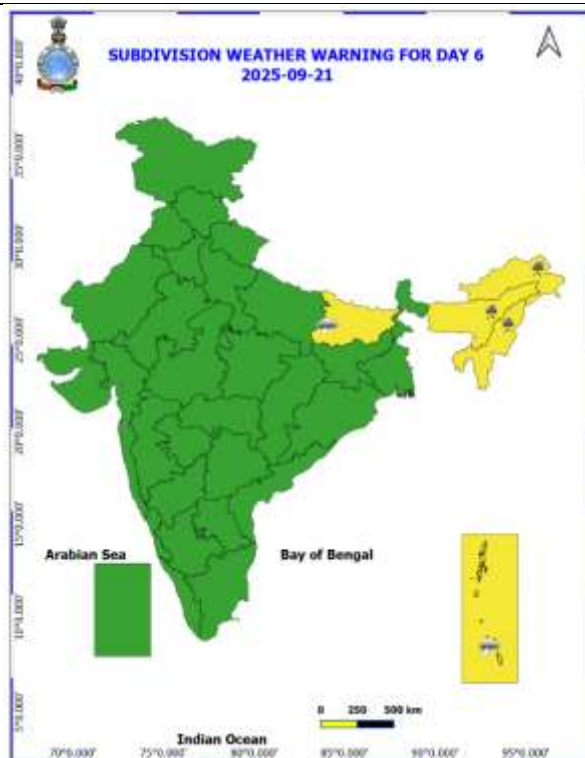
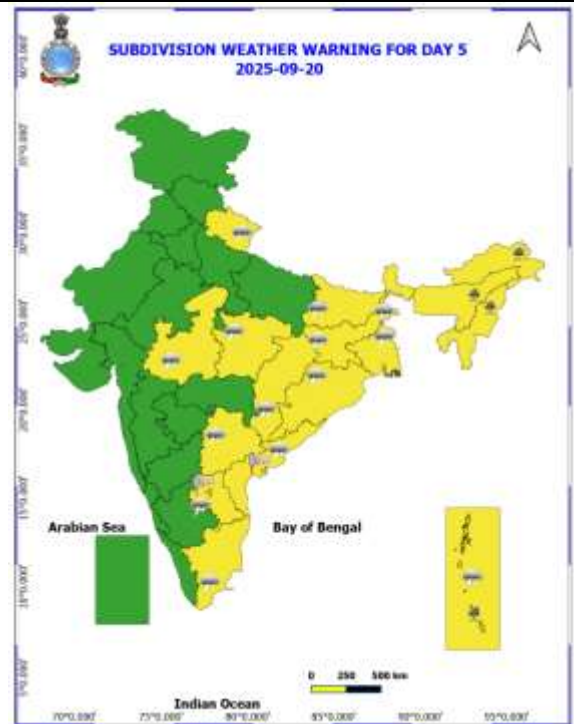
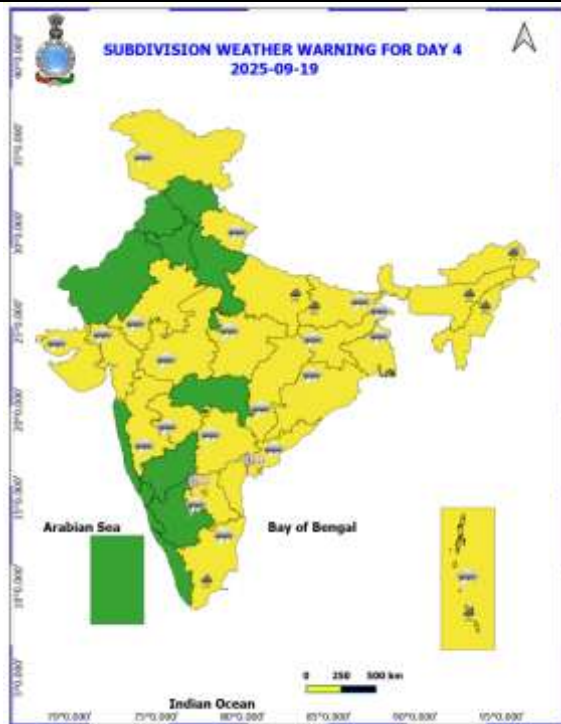
Rainfall recorded (in cm) during past 24 hours till 0830 hours IST of today, the 16th September (≥ 7 cm):

- ❖ **Uttarakhand:** Sahastradhara (AWS) 26, Narendranagar (dist Garhwal Tehri) 20, Haripur (dist Dehradun) 17, Haldwani (dist Nainital) 13, Nainital (dist Nainital) 12, Jollygrant (dist Dehradun) 11, Loharkhet (dist Bageshwar) 10, Didihat (dist Pithoragarh) 10, Mussoorie (dist Dehradun) 9, Sama (dist Bageshwar) 8, Ganganagar (dist Rudrapur) 7, Rishikesh (dist Dehradun) 7, Uttar Kashi (cwc) (dist Uttarkashi) 7,
- ❖ **Assam & Meghalaya:** Cherrapunji (rkm) (dist East Khasi Hills) 21, Panbari (dist Chirang) 8, Aie Nh Xing (dist Bongaigaon) 7, Cherrapunji (dist East Khasi Hills) 7, Khowang (dist Dibrugarh) 7,
- ❖ **East Uttar Pradesh:** Elgin Bridge (dist Barabanki) 15, Colonganj (dist Gonda) 14, Bahraich (dist Bahraich) 12, Mahsi (dist Bahraich) 12, Kaiserganj (dist Bahraich) 11, Nanpara (dist Bahraich) 11, Shardanagar (dist Kheri) 10, Ayodhya (ag) (dist Ayodhya) 9, Bhinga (dist Shrawasti) 8, Fatehpur Tehsil (dist Barabanki) 8, Kheri Lakhimpur (dist Kheri) 7, Sirauli Gauspur Tehsil (dist Barabanki) 7,
- ❖ **Sub-Himalayan West Bengal & Sikkim:** Kumargram (dist Alipurduar) 15, Hilla T.e. (dist Jalpaiguri) 14, Moraghat Tea Estate (dist Jalpaiguri) 12, Kurti T.e. (dist Jalpaiguri) 12, Bhagatpur Tea Estate (dist Jalpaiguri) 11, Darjeeling (dist Darjeeling) 11, Nagarkata (dist Jalpaiguri) 11, Kalimpong (dist Kalimpong) 10, Ghatia T.e. (dist Jalpaiguri) 10, Khanitar (dist Pakyong) 10, Namthang (dist Namchi) 10, Tra Nagrakata (dist Jalpaiguri) 10, Pakyong (dist Pakyong) 9, Amfu Kalimpong (dist Kalimpong) 9, Gyalsing (pto) (dist Gyalshing) 9, Zurrantee T.e (dist Jalpaiguri) 9, Munsong (dist Kalimpong) 9, Chalouni Tea Estate (dist Jalpaiguri) 8, Lava (dist Kalimpong) 8, Majitar (dist Pakyong) 8, Diana Tea Estate (dist Jalpaiguri) 8, Jhallong (dist Kalimpong) 8, Chengmari/diana (dist Jalpaiguri) 8, Indong T.e. (dist Jalpaiguri) 8, Balurghat (dist South Dinajpur) 7, Dentam (dist Gyalshing) 7, Gangtok (dist Gangtok) 7, Pedong (dist Kalimpong) 7,
- ❖ **Himachal Pradesh:** Simla (dist Shimla) 14, Nagrota Surian (dist Kangra) 13, Chuari (dist Chamba) 8,
- ❖ **Rajalaseema:** Chandragiri (dist Tirupati) 14, Srialahasti (dist Tirupati) 7, Tirupati Aero (dist Tirupati) 7,
- ❖ **Bihar:** Bhawanipur (dist Purnea) 13, Rupouli (dist Purnea) 10, Masaurhi (dist Patna) 9, Sonbarsa (dist Saharsa) 8, Dhanarua (dist Patna) 7, Fatuha (dist Patna) 7,
- ❖ **Odisha:** Ambabbona (dist Bargarh) 12, Jamsolaghat (dist Mayurbhanj) 10, Banki (dist Cuttack) 9, Banarpal (dist Angul) 9, Chandanpur (dist Mayurbhanj) 8, Sarasakana (dist Mayurbhanj) 8, Cuttack (dist Cuttack) 8, Parjang (dist Dhenkanal) 7,
- ❖ **Marathawada:** Jalna (dist Jalna) 12, Himayatnagar (dist Nanded) 11, Paithan (dist Chh. Sambhajinagar) 9, Soegaon (dist Chh. Sambhajinagar) 9, Kannad (dist Chh. Sambhajinagar) 7, Wadawani (dist Beed) 7,
- ❖ **Tamil Nadu:** Zone 15 Okkiyam Thoraipakkam (dist Chennai), Zone 10 Saidapet (dist Chennai) 12 each, Zone 15 Kannagi Nagar (dist Chennai), Vellore (dist Vellore) 11 each, Pallipattu (dist Tiruvallur), Arcot (dist Ranipet), Ammundi (dist Vellore) 9 each, Zone 14 Pallikaranai (dist Chennai), Zone 14 Medavakkam (dist Chennai), Zone 02 Manali (dist Chennai), DGP Office (dist Chennai), Zone 02 Manali New Town (dist Chennai) 8 each, Zone 15 Sholinganallur (dist Chennai), Zone 13 Adyar (dist Chennai), Zone 15 Neelankarai (dist Chennai), Sholinganallur (dist Chennai), Zone 10 Vadapalani (dist Chennai), Zone 14 Narayanapuram Lake (dist Chennai), Zone 04 Kasimedu (dist Chennai), Ayanavaram Taluk Office (dist Chennai), Katpadi (dist Vellore), Zone 13 Raja Annamalaipuram (dist Chennai), Minnal (dist Ranipet) 7 each,
- ❖ **Vidarbha:** Malkapur (dist Buldhana) 11,
- ❖ **Nagaland, Manipur, Mizoram & Tripura:** Jiribam_ Aws (dist Imphal East) 11, Sainik School_arg (dist Imphal East) 10,
- ❖ **Andaman & Nicobar Islands:** Iaf Carnicobar (dist Nicobar) 10,
- ❖ **East Madhya Pradesh:** Kurai (dist Seoni) 9, Sihawal (dist Sidhi) 7,
- ❖ **Telangana:** Alladurg (dist Medak) 9, Regode (dist Medak) 9, Papannapet (dist Medak) 9, Tekmal (dist Medak) 9, Luxettipet (dist Mancherial) 8, Medak (dist Medak) 7, Pegadapalle (dist Jagtial) 7, Medak(arg) (dist Medak) 7, Kagaznagar (dist Kumaram Bheem) 7,
- ❖ **Gangetic West Bengal:** Luchipur (dist Paschim Bardhaman) 8, Labpur (dist Birbhum) 8, Tilpara Barrage (dist Birbhum) 8, Kandi (dist Murshidabad) 7, Sri Niketan (dist Birbhum) 7,
- ❖ **Madhya Maharashtra:** Rahuri (dist Ahilyanagar) 8, Yeola (dist Nashik) 7, Pathardi (dist Ahilyanagar) 7,
- ❖ **Jharkhand:** Gurabandha (dist East Singhbhum) 8, Zrs Dumka (dist Dumka) 8, Maharo (dist Dumka) 7,
- ❖ **Arunachal Pradesh:** Pasighat Cwc (dist East Siang) 8, Pasighat_ Aero (dist East Siang) 7,
- ❖ **Konkan:** Palghar_agri (dist Palghar) 7,
- ❖ **West Madhya Pradesh:** Raisen-aws (dist Raisen) 7,
- ❖ **Coastal Andhra Pradesh:** Rapur (dist Spsr Nellore) 7,
- ❖ **Chhattisgarh:** Khadgava (dist Manendragarh Bharatpur) 7, Champa (dist Janjgir) 7, Pachpedi (dist Bilaspur) 7, Bamhndih (dist Janjgir) 7,

Table-1								
7 Days Rainfall Forecast								
S.No.	Subdivision	16- Sep	17- Sep	18- Sep	19- Sep	20- Sep	21- Sep	22- Sep
		Day 1	Day 2	Day 3	Day 4	Day 5	Day 6	Day 7
1	ANDAMAN & NICOBAR ISLANDS	FWS	WS	WS	WS	WS	FWS	FWS
2	ARUNACHAL PRADESH	FWS	FWS	SCT	SCT	SCT	SCT	SCT
3	ASSAM & MEHGHALAYA	WS	FWS	FWS	FWS	FWS	SCT	FWS
4	NAGALAND, MANIPUR, MIZORAM AND TRIPURA	WS	FWS	FWS	FWS	FWS	FWS	FWS
5	SUB HIMALAYAN WEST BENGAL & SIKKIM	WS	WS	WS	FWS	FWS	FWS	FWS
6	GANGETIC WEST BENGAL	WS	WS	WS	FWS	SCT	SCT	SCT
7	ODISHA	FWS	SCT	SCT	ISOL	ISOL	SCT	SCT
8	JHARKHAND	WS	WS	FWS	FWS	FWS	SCT	SCT
9	BIHAR	FWS	FWS	FWS	FWS	SCT	SCT	SCT
10	EAST UTTAR PRADESH	FWS	FWS	FWS	SCT	SCT	SCT	ISOL
11	WEST UTTAR PRADESH	ISOL	SCT	SCT	ISOL	ISOL	DRY	DRY
12	UTTARAKHAND	FWS	SCT	SCT	SCT	SCT	SCT	SCT
13	HARYANA, CHANDIGARH & DELHI	ISOL	ISOL	SCT	ISOL	DRY	DRY	DRY
14	PUNJAB	ISOL	ISOL	SCT	ISOL	DRY	DRY	DRY
15	HIMACHAL PRADESH	FWS	SCT	SCT	ISOL	ISOL	ISOL	ISOL
16	JAMMU AND KASHMIR AND LADAKH	SCT	ISOL	SCT	ISOL	DRY	DRY	DRY
17	WEST RAJASTHAN	DRY	DRY	DRY	DRY	DRY	DRY	DRY
18	EAST RAJASTHAN	DRY	DRY	DRY	DRY	DRY	DRY	DRY
19	WEST MADHYA PRADESH	SCT	SCT	FWS	FWS	FWS	SCT	SCT
20	EAST MADHYA PRADESH	FWS	FWS	FWS	FWS	FWS	SCT	SCT
21	GUJRAT REGION	SCT	SCT	SCT	SCT	SCT	SCT	SCT
22	SAURASHTRA & KUTCH	ISOL	ISOL	ISOL	ISOL	ISOL	ISOL	ISOL
23	KONKAN & GOA	WS	FWS	FWS	FWS	FWS	FWS	FWS
24	MADHYA MAHARASHTRA	FWS	FWS	SCT	SCT	SCT	SCT	SCT
25	MARATHWADA	SCT	SCT	SCT	SCT	SCT	SCT	SCT
26	VIDARBHA	WS	WS	FWS	FWS	SCT	SCT	SCT
27	CHHATTISGARH	FWS	FWS	SCT	SCT	FWS	FWS	FWS
28	COASTAL ANDHRA PRADESH	SCT	SCT	SCT	SCT	SCT	SCT	SCT
29	TELANGANA	FWS	FWS	FWS	SCT	SCT	SCT	SCT
30	RAYALASEEMA	SCT	FWS	FWS	SCT	SCT	SCT	SCT
31	TAMILNADU & PUDUCHERRY	SCT	FWS	FWS	SCT	ISOL	ISOL	ISOL
32	COSTAL KARNATAKA	WS	WS	FWS	FWS	FWS	FWS	WS
33	NORTH INTERIOR KARNATAKA	WS	WS	FWS	SCT	ISOL	ISOL	SCT
34	SOUTH INTERIOR KARNATAKA	FWS	WS	SCT	SCT	ISOL	ISOL	ISOL
35	KERALA AND MAHE	FWS	WS	WS	FWS	SCT	SCT	SCT
36	LAKSHADWEEP	FWS	FWS	FWS	SCT	SCT	SCT	SCT

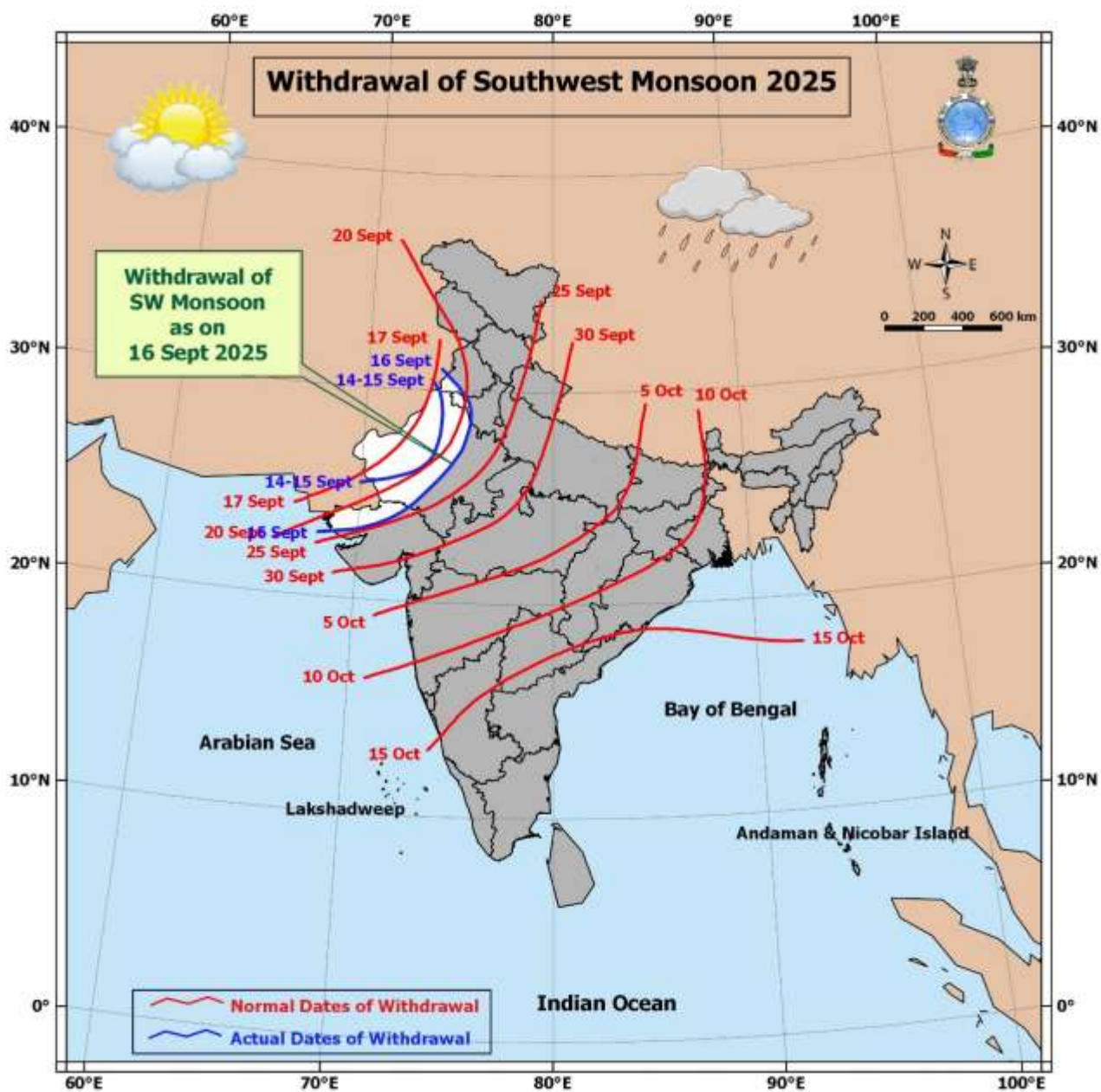
- As the lead period increases forecast accuracy decrease.





- Action may be taken based on ORANGE AND REDCOLOUR warnings.
- Vulnerable regions likely urban and hilly areas action may be initiated for heavy rainfall warning.
- As the lead period increases forecast accuracy decreases.

Detailed districtwise Multi Hazard weather warning for next five days available at
<https://mausam.imd.gov.in/responsive/districtWiseWarningGIS.php>



Weather forecast over Delhi/NCR during 16th to 19th September 2025**Past Weather:**

There has been no large change in the minimum temperature and rise in maximum temperature up to 1 to 2°C over Delhi/NCR during the past 24 hours. The maximum and minimum temperatures over Delhi were around 34 to 36°C and 23 to 26°C respectively. The minimum and maximum temperatures were near normal. Partly cloudy sky conditions with predominant surface wind from the northwest/west direction with wind speeds up to 18 kmph prevailed during the past 24 hours. Mainly clear sky conditions with a wind speed of less than 12 kmph from the southwest direction prevailed over the region in the forenoon today.

Weather Forecast:

16.09.2025: Mainly clear sky becoming partly cloudy sky towards afternoon. The maximum and minimum temperatures over Delhi are likely to be in the range of 34 to 36°C. The maximum temperature will be above normal up to 1 to 2°C. The predominant surface wind will likely to be from the northwest direction with a wind speed of up to 10-15 kmph during afternoon hours. The wind speed will decrease becoming less than 20 kmph from the southeast direction during the evening and night.

17.09.2025: Partly cloudy sky. The maximum and minimum temperatures over Delhi are likely to be in the range of 33 to 35°C and 23 to 25°C respectively. The minimum temperature will be near normal and the maximum temperature will be near normal. The predominant surface wind will likely to be from the southeast direction with a wind speed of up to 10-15 kmph during morning hours. The wind speed will gradually increase becoming less than 18 kmph from the northeast direction in the afternoon. The wind speed will decrease becoming less than 15 kmph from the southeast direction during the evening and night.

18.09.2025: Partly cloudy sky. The maximum and minimum temperatures over Delhi are likely to be in the range of 33 to 35°C and 23 to 25°C respectively. The minimum temperature will be below normal up to 1 - 2°C and the maximum temperature will be below normal up to 1 - 2°C. The predominant surface wind will likely to be from the southeast direction with a wind speed of up to 10-15 kmph during morning hours. The wind speed will gradually increase becoming less than 18 kmph from the northeast direction in the afternoon. The wind speed will decrease becoming less than 12 kmph from the southeast direction during the evening and night.

19.09.2025: Partly cloudy sky. The maximum and minimum temperatures over Delhi are likely to be in the range of 33 to 35°C and 23 to 25°C respectively. The minimum temperature will be below normal up to 1 - 2°C and the maximum temperature will be below normal up to 1 - 2°C. The predominant surface wind will likely to be from the southeast direction with a wind speed of up to 08-12 kmph during morning hours. The wind speed will gradually increase becoming less than 15 kmph from the northeast direction in the afternoon. The wind speed will decrease becoming less than 12 kmph from the southeast direction during the evening and night.

Impact & Action Suggested due to

- ❖ **Heavy to very heavy rainfall (12-20 cm)** at isolated places over Uttarakhand on 16th; East Uttar Pradesh, Bihar, Sub-Himalayan West Bengal & Sikkim on 16th & 17th September.

Impact Expected

- Localized Flooding of roads, water logging in low lying areas and closure of underpasses mainly in urban areas of the above region.
- Occasional reduction in visibility due to heavy rainfall.
- Disruption of traffic in major cities due to water logging in roads leading to increased travel time.
- Minor damage to kutcha roads.
- Possibilities of damage to vulnerable structure.
- Localized Landslides/Mudslides/landslips/mudslips/landsinks/mudsinks.
- Damage to horticulture and standing crops in some areas due to inundation.
- It may lead to riverine flooding in some river catchments (for riverine flooding please visit Web page of CWC)

Action Suggested

- Check for traffic congestion on your route before leaving for your destination.
- Follow any traffic advisories that are issued in this regard.
- Avoid going to areas that face the water logging problems often.
- Avoid staying in vulnerable structure.

Agromet advisories for likely impact of Heavy / Heavy to Very Heavy Rainfall (Based on the IBF and advisories issued by different AMFUs)

- In **Maharashtra**, drain out excess water from fields of vegetables and fruit orchards in **Konkan**; rice, sugarcane, pigeon pea, soybean, maize, vegetables and fruit orchards in **Madhya Maharashtra**; sugarcane, sorghum, soybean, turmeric, vegetables and fruit orchards in **Marathwada** and pigeon pea, cotton, soybean, maize, vegetables and fruit orchards in **Vidarbha**.
- In **Arunachal Pradesh**, maintain proper drainage in standing crops such as rice, soybean, finger millet, vegetables and fruit orchards to avoid water stagnation. Avoid fresh sowing of French bean during heavy rainfall and ensure proper drainage in already sown crop.
- In **Assam**, ensure proper drainage in fields of rice, sugarcane, black gram and sesame in **Hill Zone**. In **Lower Brahmaputra Valley Zone**, ensure proper drainage system in *Sali* rice fields and nursery bed of vegetables. Cover the nursery bed with thin polythene to avoid the damages due to heavy rainfall. In **Upper Brahmaputra Valley Zone**, harvest the matured vegetables and fruits and transfer it to a safer location and make arrangements to drain out excess water from the standing crop fields. In **North Bank Plain Zone**, ensure proper drainage in rice, sesame and vegetables and keep the harvested produce of jute at safer place.
- In **Meghalaya**, drain out excess water from ginger and vegetable fields and fruit orchards. Provide support to tall and fragile crops like banana, papaya, pumpkin, etc. to prevent lodging.
- In **Sub-Himalayan West Bengal**, drain out excess water from *aman* paddy and vegetable fields such as chilli, bitter gourd, pointed gourd, okra, brinjal etc. in **Terai Zone** and black gram, finger millet, ginger, dalley khorsani, vegetables and fruit orchards in **Hill Zone**.
- In **Jharkhand**, keep the harvested produce of green gram in safer places. Make necessary arrangements to drain out excess water from already sown cabbage, cauliflower, radish and early potato in **Western Plateau Zone**.
- In **Bihar**, ensure proper drainage of excess rainwater from standing crops such as maize, finger millet and vegetables in **North East Alluvial Zone**.
- In **Odisha**, drain out excess rain water from fields of rice, maize, black gram and vegetables in **North Central Plateau Zone**.
- In **Uttarakhand**, ensure proper drainage in the fields of green gram, black gram, soybean, barnyard millet and finger millet in **Sub Humid Sub Tropic Zone**. In **Bhabar and Tarai Zone**, maintain proper drainage in

fields of rice, pigeon pea, black gram, green gram, finger millet, maize and soybean. Avoid sowing of potato and radish under heavy rainfall conditions and ensure proper drainage in already sown crop. In **Hill Zone**, undertake harvesting of matured crops of barnyard millet, ginger and rainfed rice and keep the harvested produce in safe place. Ensure proper drainage in pigeon pea and vegetable crops.

- In **Himachal Pradesh**, drain out excess water from the fields of rice, maize and vegetables in **Sub-Montane & Low Hills Sub-Tropical Zone** and vegetable fields and fruit orchards in **High Hills Sub Temperate Wet Zone** and **Mid Hills Sub Humid Zone**. Keep the harvested produce in safer places.
- In **Uttar Pradesh**, dreain out excess rain water from the fields of rice, green gram, balck gram, pigeon pea and vegetables in **Bundelkhand Zone**.
- In **Telangana**, ensure adequate drainage facilities to drain out excess rain water in fields of rice, maize, cotton, soybean, pigeon pea, turmeric and vegetables.

Livestock / Fishery

- Keep the animals inside the shed during heavy rainfall and provide them balanced feed.
- Store feed and fodder in a safe place to prevent spoilage.
- Construct an outlet with proper netting around the ponds to drain out excess water, thereby preventing fish from escaping in case of overflow.

Agromet advisories for likely impact of Thunderstorm / Gusty Winds / Squally Winds (Based on the IBF and advisories issued by different AMFUs)

- Provide mechanical support to horticultural crops and staking or support to vegetables and young fruit plants / fruit-bearing plants to avoid lodging due to strong winds.

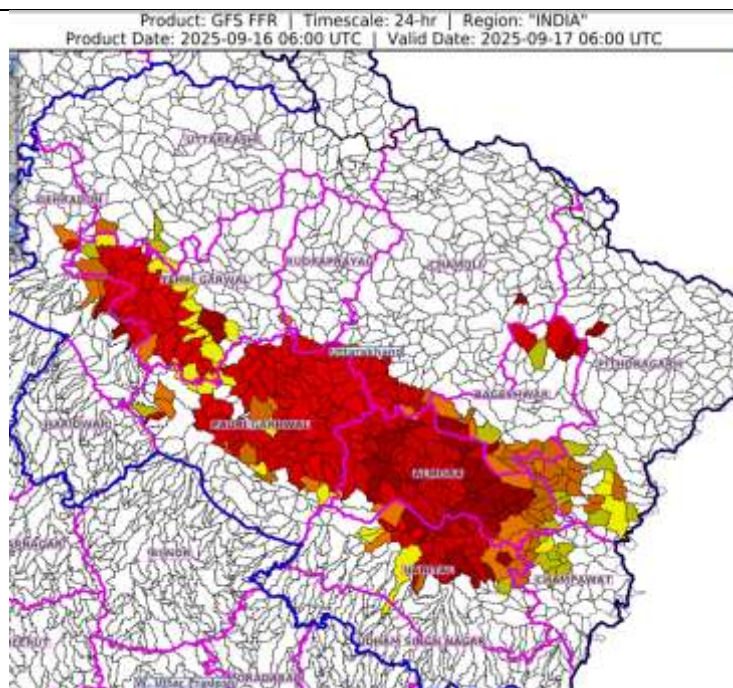
Flash Flood Guidance:

24 hours Outlook for the Flash Flood Risk (FFR) till 1130 IST of 17-09-2025:

Low to Moderate flash flood risk likely over few watersheds & neighbourhoods of following Met Sub-divisions during next 24 hours.

Uttarakhand - Almora, Bageshwar, Chamoli, Champawat, Dehradun, Nanital, Pauri Garhwal, Pithoragarh, Rudraprayag, Tehri Garwal and Uttarkashi districts.

Surface runoff/ Inundation may occur at some fully saturated soils & low-lying areas over Area of Concern (AoC) as shown in map due to expected rainfall occurrence in next 24 hours.



Legends & abbreviations:

- ❖ **Heavy Rain:**64.5-115.5mm; **Very Heavy Rain:**115.6-204.4mm; **Extremely Heavy Rain:** >204.4mm.
- ❖ **Obsy:** Observatory; Automatic Weather Station; **ARG:** Automatic Rain Gauge; **dist:** District; **NH:** National Highway; **KVK:** Krishi Vigyan Kendra; **DVC:** Damodar Valley Corporation; **PTO:** Part Time Office, **Aero:** Aerodrome, **IAF:** Indian Air Force.
- ❖ **Region wise classification of meteorological Sub-Divisions:**
 - **Northwest India:** Western Himalayan Region (Jammu-Kashmir-Ladakh-Gilgit-Baltistan-Muzaffarabad, Himachal Pradesh and Uttarakhand); Punjab, Haryana-Chandigarh-Delhi; West Uttar Pradesh, East Uttar Pradesh, West Rajasthan and East Rajasthan.
 - **Central India:** West Madhya Pradesh, East Madhya Pradesh, Vidarbha and Chhattisgarh.
 - **East India:** Bihar, Jharkhand, Sub-Himalayan West Bengal & Sikkim; Gangetic West Bengal, Odisha and Andaman & Nicobar Islands.
 - **Northeast India:** Arunachal Pradesh, Assam & Meghalaya and Nagaland, Manipur, Mizoram & Tripura.
 - **West India:** Gujarat Region, Saurashtra & Kutch, Konkan & Goa, Madhya Maharashtra and Marathawada.
 - **South India:** Coastal Andhra Pradesh & Yanam, Telangana, Rayalaseema, Coastal Karnataka, North Interior Karnataka, South Interior Karnataka, Kerala & Mahe, Tamil Nadu, Puducherry & Karaikal and Lakshadweep.

LEGENDS

1. अंडमान और निकोबार द्वीपसमूह

2. अरुणाचल प्रदेश

3. असम और मेघालय

4. नागालैंड, मणिपुर, मिजोरम और त्रिपुरा

5. उप-हिमालयी पश्चिम बंगाल और सिक्किम

6. गंगीय पश्चिम बंगाल

7. ओडिशा

8. झारखंड

9. बिहार

10. पूर्वी उत्तर प्रदेश

11. पश्चिम उत्तर प्रदेश

12. उत्तराखंड

13. हरियाणा, चंडीगढ़ और दिल्ली

14. पंजाब

15. हिमाचल प्रदेश

16. जम्मू और कश्मीर और लद्दाख

17. पश्चिम राजस्थान

18. पूर्वी राजस्थान

19. पश्चिम मध्य प्रदेश

20. पूर्वी मध्य प्रदेश

21. गुजरात

22. सौराष्ट्र

23. कोंकण और गोवा

24. मध्य महाराष्ट्र

25. मराठवाड़ा

26. विदर्भ

27. छत्तीसगढ़

28. तटीय आंध्र प्रदेश और यनम

29. तेलंगाना

30. रायलसीमा

31. तमिलनाडु, पुडुचेरी और कराईकल

32. तटीय कर्नाटक

33. आंतरिक उत्तरी कर्नाटक

34. आंतरिक दक्षिणी कर्नाटक

35. केरल और माहे

36. लक्षद्वीप



1. Andaman & Nicobar Islands

2. Arunachal Pradesh

3. Assam & Meghalaya

4. Nagaland, Manipur, Mizoram & Tripura

5. Sub-Himalayan West Bengal & Sikkim

6. Gangetic West Bengal

7. Odisha

8. Jharkhand

9. Bihar

10. East Uttar Pradesh

11. West Uttar Pradesh

12. Uttarakhand

13. Haryana, Chandigarh & Delhi

14. Punjab

15. Himachal Pradesh

16. Jammu & Kashmir and Ladakh

17. West Rajasthan

18. East Rajasthan

19. West Madhya Pradesh

20. East Madhya Pradesh

21. Gujarat

22. Saurashtra

23. Konkan & Goa

24. Madhya Maharashtra

25. Marathwada

26. Vidarbha

27. Chhattisgarh

28. Coastal Andhra Pradesh & Yanam

29. Telangana

30. Rayalaseema

31. Tamilnadu, Puducherry & Karaikal

32. Coastal Karnataka

33. North Interior Karnataka

34. South Interior Karnataka

35. Kerala & Mahe

36. Lakshadweep

SPATIAL DISTRIBUTION (% of Stations reporting)

% Stations	Category	% Stations	Category
76-100	Widespread (WS/Most Places)	26-50	Scattered (SCT/A Few Places)
51-75	Fairly Widespread (FWS/Many Places)	1-25	Isolated (ISOL)



Fog



Heavy Rain



Very Heavy Rain



Extremely Heavy Rain



Thunder & Lightning



Hailstorm



Dust Raising Winds



Heavy Snow



Dust Storm



Heat Wave



Warm Night



Hot Day



Hot & Humid



Strong Surface Winds



Cold Wave



Cold Day



Ground Frost

COLOUR CODED WARNING

No Warning (No Action)

Watch (Be Aware)

Alert (Be Prepared To Take Action)

Warning (Take Action)

Probabilistic Forecast

Terms	Probability of Occurrence (%)
Unlikely	< 25
Likely	25 - 50
Very Likely	50 - 75
Most Likely	> 75

* Red colour warning does not mean "Red Alert", Red colour warning means "Take Action".

Forecast and Warning for any day is valid from 0830 hours IST of day till 0830 hours IST of next day.

For more details, kindly visit <https://mausam.imd.gov.in> or contact: 011-2434-4599

(Service to the Nation since 1875)

DEFINITION/CRITERIA

Rain/ Snow *

Heavy: 64.5 to 115.5 mm/cm *
Very Heavy: 115.6 to 204.4 mm/cm *
Extremely Heavy: > 204.4 mm/cm *

Heat Wave

When maximum temperature of a station reaches $\geq 40^{\circ}\text{C}$ for plains and $\geq 30^{\circ}\text{C}$ for hilly regions

(a) Based on Departure from normal

Heat Wave: Maximum Temperature Departure from normal 4.5°C to 6.4°C .

Severe Heat Wave: Maximum Temperature Departure from normal $\geq 6.5^{\circ}\text{C}$

(b). Based on Actual maximum temperature

Heat Wave: When actual maximum temperature $\geq 45^{\circ}\text{C}$.

Severe Heat Wave: When actual maximum temperature $\geq 47^{\circ}\text{C}$.

(c). Criteria for heat wave for coastal stations

When maximum temperature departure is $> 4.5^{\circ}\text{C}$ from normal. Heat Wave may be described provided maximum temperature $\geq 37^{\circ}\text{C}$.

Warm Night

When maximum temperature remains 40°C

Warm Night: When minimum temperature departure 4.5°C to 6.4°C .

Severe Warm Night: When minimum temperature departure $> 6.4^{\circ}\text{C}$.

Cold Wave

When minimum temperature of a station $\leq 10^{\circ}\text{C}$ for plains and $\leq 0^{\circ}\text{C}$ for hilly regions.

(a). Based on departure

Cold Wave: Minimum Temperature Departure from normal -4.5°C to -6.4°C .

Severe Cold Wave: Minimum Temperature Departure from normal $\leq -6.5^{\circ}\text{C}$

(b) Based on actual Minimum Temperature (for Plains only)

Cold Wave: When Minimum Temperature is $\leq 4.0^{\circ}\text{C}$

Severe Cold Wave: When Minimum Temperature is $\leq 2.0^{\circ}\text{C}$

(c) For Coastal Stations

When Minimum Temperature departure is $\leq -4.5^{\circ}\text{C}$ & actual Minimum Temperature is $\leq 15^{\circ}\text{C}$

Cold Day

When minimum temperature of a station $\leq 10^{\circ}\text{C}$ for plains and $\leq 0^{\circ}\text{C}$ for hilly regions

Based on departure

Cold Day: Maximum Temperature Departure from normal -4.5°C to -6.4°C .

Severe Cold Day: Maximum Temperature Departure from normal $\leq -6.5^{\circ}\text{C}$

Fog

Phenomenon of small droplets suspended in air and the horizontal visibility $< 1\text{km}$

Moderate Fog: When the visibility between 500-200 metres

Dense Fog: when the visibility between 50- 200 metres

Very Dense Fog: when the visibility < 50 metres

Thunderstorm

Sudden electrical discharges manifested by a flash of light (Lightning) and a sharp rumbling sound (thunder)

Dust/Sand Storm

An ensemble of particles of dust or sand energetically lifted to great heights by a strong and turbulent wind.

Frost

Ice deposits on ground

Air temperature $\leq 4^{\circ}\text{C}$ (over Plains)

Squall

A strong wind that rises suddenly, lasts for atleast 1 minute.

Moderate: Wind speed 52-61 kmph

Severe: Wind speed 62-67 kmph

Very Severe: Wind speed > 67 kmph

Sea State

Effect of various waves in the sea over specific area

Rough to very rough: Wind speed 41-62 kmph (22-33 knots) & Wave height 2.5-6 metre

High to very high: Wind speed 63-117 kmph (34-63 knots) & Wave height 6-14 metre

Phenomenal: Wind speed > 117 kmph (> 63 knots) & Wave height > 14 metre

Cyclone

Cyclonic Storm: Wind speed 62-87 kmph (34-47 knots)

Severe Cyclonic Storm: Wind speed 88-117 kmph (48-63 knots)

Very Severe Cyclonic Storm: Wind speed 118-165 kmph (64 - 89 knots)

Extremely Severe Cyclonic Storm: Wind speed 166-220 kmph (90 -119 knots)

Super Cyclone Storm: Wind speed > 220 kmph (> 119 knots)

* Red colour warning does not mean "Red Alert", Red colour warning means "Take Action".

Forecast and Warning for any day is valid from 0830 hours IST of day till 0830 hours IST of next day.

For more details, kindly visit <https://mausam.imd.gov.in> or contact: 011-2434-4599

(Service to the Nation since 1875)

Hot and Humid: When maximum temperatures remain 3°C above normal along with the above normal relative humidity.